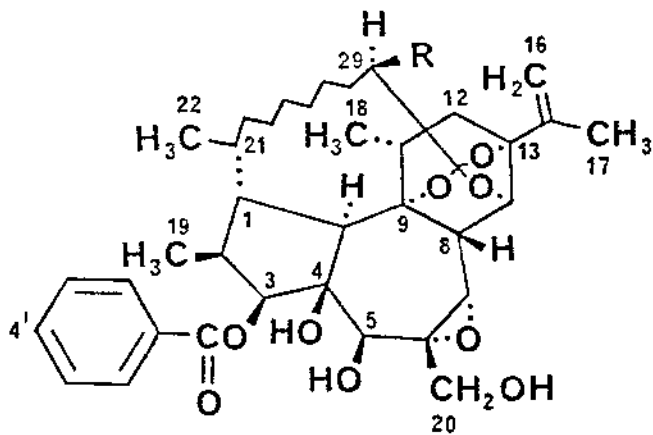


Table I - Antileukemic and Cytotoxic Activity of Dirca occidentalis Isolates^a

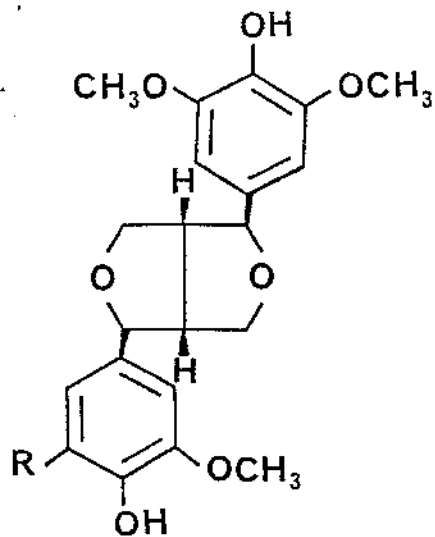
Compound	NSC-Number	P-388 <i>in vivo</i>		P-388 <i>in vitro</i> ED ₅₀ , µg/ml
		Dose µg/kg	%T/C	
Pimelea factor P ₂ (I)	334694	400	147	0.0000012
		200	127	
		100	110	
		50	116	
		25	110	
Dircin (II)	334696	125	156	0.0000025
		62.5	147	
		31.3	125	
(-)-Medioresinol (III)	329245		NT ^b	0.33
(+) -Syringaresinol (IV)	329246	2000	100	0.41
		1000	108	
		500	107	
		250	96	
(-) -Lariciresinol (V)	329247		NT ^b	0.23
Daphnoretin (VI)	291852	2000	107	3.5
		1000	100	
		500	95	
		250	100	

^a Tested according to standard protocols (6). ^b NT = Not tested.



I R = H

II R = OCOC₂H₅



III R = H

IV R = OCH₃

